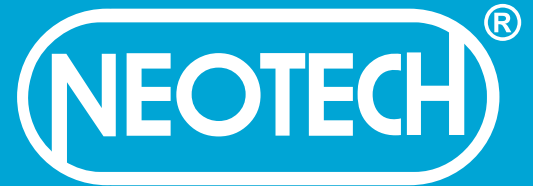




www.neotechworld.com

Quality Solutions For Over 30 Years



MOVING AHEAD WITH NEW TECHNOLOGIES

INDUSTRIAL PRODUCT BROCHURE

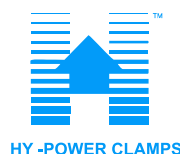
PRODUCTS | SERVICES | SOLUTIONS

Toggle Clamps, Pneumatic & Hydraulic Clamping Cylinders | Machine & Fixture Elements |
Manual, Powered & Hydraulic Tools | Hydraulic System Accessories | Filtration & Separation Systems |
Chip Handling Systems | Metrology & Inspection | Material Handling & Storage Solutions.

INDEX

PRODUCT CATEGORIES	PAGE NO.
• TOGGLE & PNEUMATIC CLAMPS, MACHINE & FIXTURE ELEMENTS	04
• HYDRAULIC CLAMPING CYLINDERS & POWER SOURCES	06
• MANUAL, POWERED HAND TOOLS & TOOL STORAGE SOLUTIONS	08
• HYDRAULIC MAINTENANCE TOOLS	10
• ROTARY MAINTENANCE & UP-KEEP TOOLS	11
• HYDRAULIC ACCUMULATORS, OIL COOLERS, VALVES, CYLINDERS & PUMPS	12
• FILTRATION, SEPARATION & CHIP MANAGEMENT SYSTEMS	14
• PRECISION INSPECTION & METROLOGY EQUIPMENT	16
• MATERIAL HANDLING & STORAGE SOLUTIONS	18

OUR TECHNOLOGY PARTNERS



COMPANY PROFILE

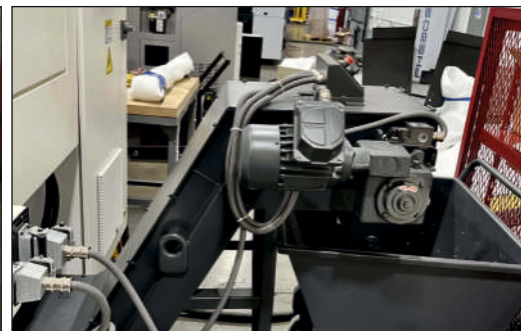
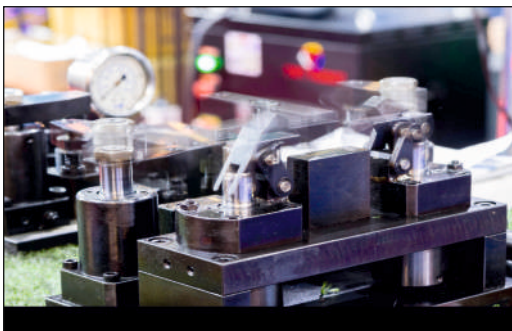
NEOTECH EQUIPMENTS was established in 1993 with a clear intent to diminish the gap between users & manufacturers of high quality industrial tools & equipments. We have successfully positioned ourselves as a reliable trade & service partner for various companies across India.

Following our motto - "**Moving Ahead with New Technologies**" since our inception we have been dedicated to supplying an assortment of high quality products to our customers. Over the years, this product range has been constantly updated & adapted to current market developments. This approach for product portfolio helps us in giving you the benefit of having "**Everything From One Source**".

In order to live up to our commitment of quality & performance, we continue to invest on employee training sessions, work with our engineers & experts on innovative & solution oriented products & services.

YOUR ADVANTAGES

- You get free of cost consultation for selection of products for your requirements by regular visits to your site by our technical sales representatives.
- You get access to our detailed technical repository including - downloadable catalogues, 2-D & 3-D drawings, product application case studies etc.
- You get planning security through our solid inventory & in-time delivery schedules.
- You get an outstanding assortment from one single source for both standard & non- standard products.
- You get cost benefit & quality assurance, as we are trusted channel partners for our domestic & international principals.
- You minimize your downtime with our supplies, with support from our dedicated & well spread out in-house service team.



TOGGLE & PNEUMATIC CLAMPS, MACHINE & FIXTURE ELEMENTS



Scan for detailed
Steel Smith Catalogue.

A. Vertical (VTC) & Horizontal (H-Series) Hold Down Toggle Clamps

These clamps hold the work piece with a downward clamping action. Clamping arms can be solid bar, U-shaped or fixed hole.

• **Capacity:** 200 kg. - 3000 kg.

B. Straight Action Clamps (HTC)

These clamps use a straight line or push/pull toggle clamping actions.

• **Capacity:** 45 kg. - 4500 kg.

C. Pull Action Clamps

Designed for sealing chambers, doors, mould closures etc. Threaded hook / U-bolt type bar provide adjustment features.

• **Capacity:** 150 kg. to 3000 kg.

D. Latch Clamps

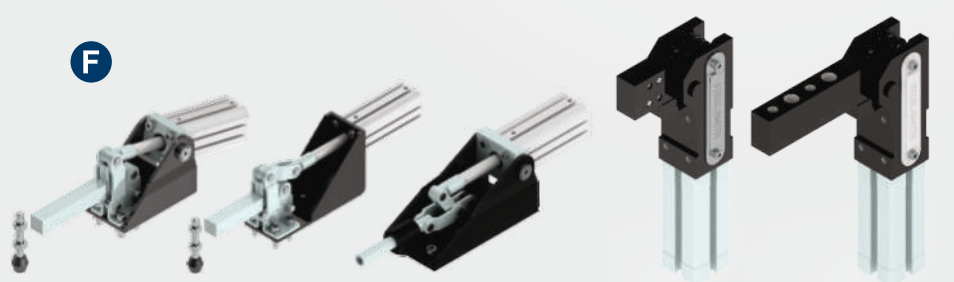
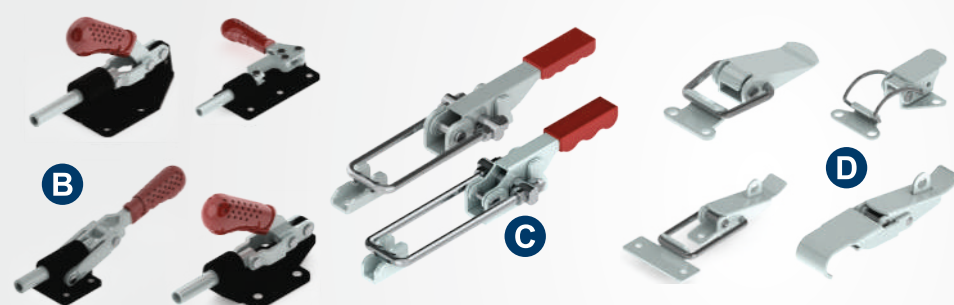
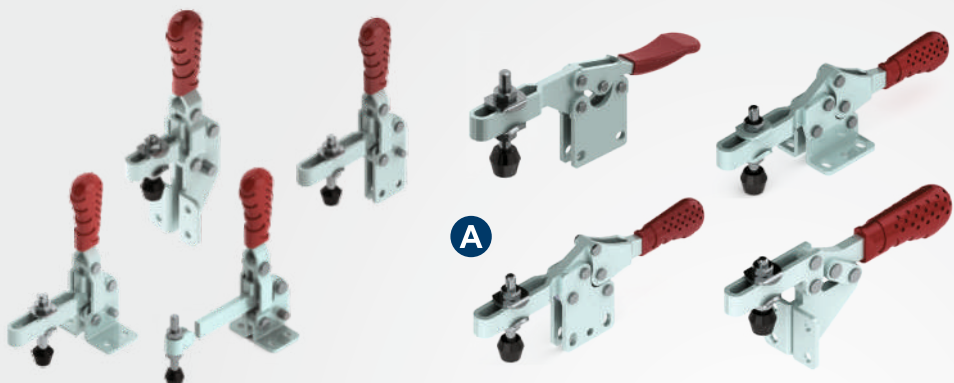
Similar to pull actions clamps, these Are used for smaller job holding applications

E. Clamping & Fixture Elements

Clamping elements are used to clamp work pieces in fixtures for machine tool production, a variety of components hold the workpiece in position for CNC machining such as: Strap Clamps, T-nut, Bolts, Washers, Washers, Adjustable Height Plates etc.

F. Pneumatic Toggle Clamps

Pneumatic clamps are toggle clamps actuated with a double acting pneumatic cylinder. These clamps can be supplied with magnetic cylinders & reed switch for sensing.





Scan for detailed
Kipp Catalogue.



G



H



I



G. Spring Plungers

Can be mounted into components & used for indexing & locking.

H. Machine Levelling Pads

Adjustable leveling feet are utilized to level a machine on uneven floors. Available in various M.O.C's: MS, SS, Plastic, ABS etc.

I. Clamping Levers, Tension Levers, Grips & Knobs

Grips & knobs are for manually fastening & clamping. There are a wide variety of designs for different conditions & clamping forces to suit any required mounted position.



J



K

J. Hand-Wheels, Crank Handles, Position Indicators

Hand-wheels are used to position & adjust shafts & spindles. Crank handles are recommended for long travel paths

K. Level Indicators, Screw Plugs

These components are used in hydraulic systems, for example as oil level gauges or for other liquids, also for containers & lubrication units.



L



M

L. Material Handling

Ideal for fixture construction & machine tool manufacturing. Suitable for lifting or traverse movement.

M. Indexing Plungers, Ball Lock Pins

Are for indexing & fastening components. Some of them have manual locking functions.

HYDRAULIC CLAMPING CYLINDERS & POWER SOURCES

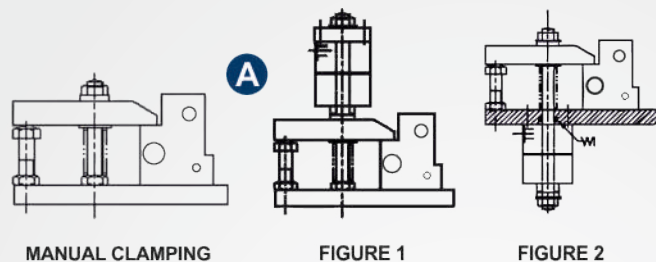


Scan for detailed
Hy-Power Clamps Catalogue.

A. Hollow Piston Cylinders

Hollow piston cylinders are single acting, spring return cylinders. The piston is provided with a through hole.

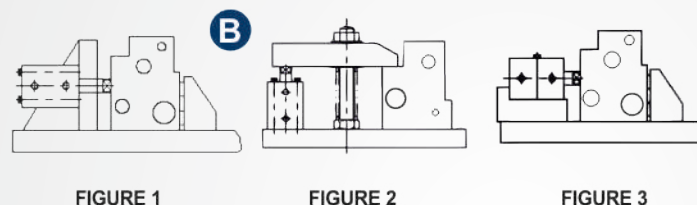
- **Stroke:** 10–25 mm.
- **Force:** up till 22 kN @ 150 bar.



B. Block Cylinders

These cylinders are very compact, due to the integral construction. they are versatile & can be mounted in different ways.

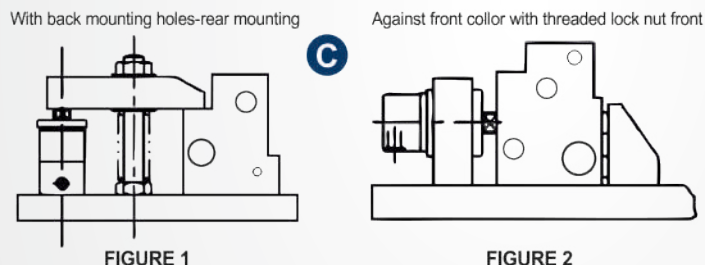
- **Stroke:** 20–50 mm.
- **Force:** Up till 46.5 kN @ 150 bar.



C. Threaded Body Cylinder

Solid piston threaded body cylinder is single acting, spring return cylinder.

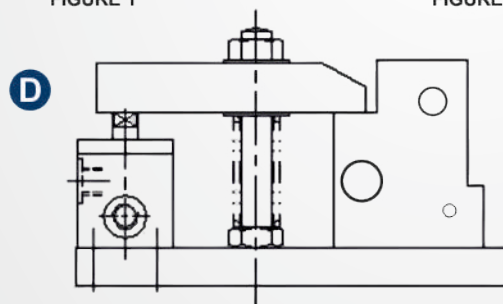
- **Stroke:** 25 to 50 mm.
- **Force:** up till 25 kN @ 150 bar.



D. Compact Cylinder

Compact cylinders are solid piston, double acting. Cylinders are very compact in the axial direction.

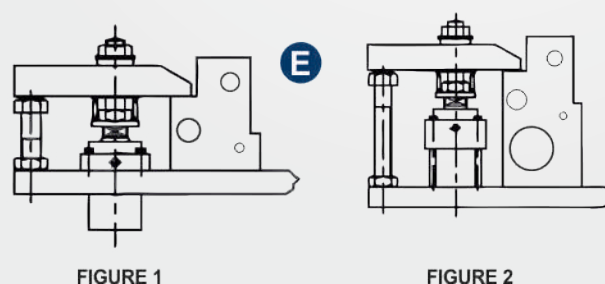
- **Stroke:** 10 mm.
- **Force:** up till 29kN @ 150 bar.

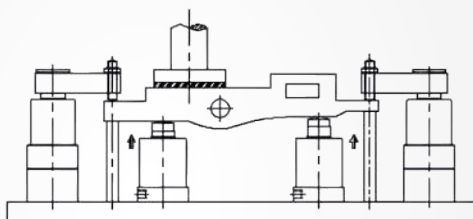


E. Pull Type Cylinder

Pull cylinders are single acting, spring return cylinders, which retract when force is applied.

- **Stroke:** 15 mm.
- **Force:** up till 30 kN @ 150 bar.




F

G


F. Vertical Swing & Swing (90 Deg) Clamps

The clamping strap rotates by 90° (vertical or horizontal) while clamping & de-clamping. Due to the swing action, loading & unloading of the job is very easy. In the unclamped position, the workpiece area is free from the strap. Available in various mounting arrangements.

- **Stroke:** 25 mm.
- **Force Max:** 20 kN @ 200 bar.

G. Hydraulic Work Supports

Hydraulic work support is a replacement to the adjustable screw jack. It is not a force exerting element but a resistance giving element.


I

H


H. Die Lifters

Die lifters are used in pairs or sets as per the 'T' slot length in the bolster. Hydraulic piston fitted with needle roller bearing lift the dies allowing the die to be easily rolled in & out during die change process.

- **Length:** 200 mm & 250 mm.
- **Stroke:** 10 mm.



I. Hydraulic Power Sources

Hydro-pneumatic intensifiers, hydraulic power packs, air operated hydraulic pumps suitable for operating hydraulic cylinders.

- **Max Pressure:** 700 bar.
- **Max Flow Rate:** 5.5 LPM.

MANUAL, POWERED HAND TOOLS & TOOL STORAGE SOLUTIONS



Scan for detailed
Snap On Catalogue.

A. Ratchets & Sockets

Ratchets from 1/4" to 1 1/2" drive sizes, dual 80 technology, 72 teeth gear ratchets & flank drive sockets offer smaller ratcheting arc & 20% more torque.

B. Wrenches

• **Range includes:** Flank Drive Combination, Spline Type, Box Type, Open End Wrenches, Striking Wrenches etc.

C. Screw Drivers

• **Range includes:** Soft Handle Flat Tip, Philip Type, Reversible Type, Hex Tip, Master Bit Sets, Long Handle, Ratcheting Screwdrivers etc.

D. Pliers & Cutters

Made with alloy steel, cold forged process provide high strength & durability to our pliers & cutters.

• **Range includes:** Pliers, Cutters, Wire Strippers, Nose Pliers, Locking Pliers, Ring & Snap Pliers, Reversible Ring Pliers etc.

E. Hammers, Punches, Chisels

Made with special energy absorbing material for powerful blows without punishing your arms.

• **Range Includes:** Soft Grip Punches & Chisels, Dead Blow Hammer, Soft Face Hammer, Heavy Duty Hammers etc.

F. Insulated Tools

Snap-on Insulated tools conform to stringent quality control & testing according to International IEC60900 standards for working with live systems up to 1000VAC & 1500VDC.

G. Non-Sparking Tools

These tools are made of either Copper-Beryllium or Aluminium-Bronze. They are suitable for applications where flammable vapours, liquids or dusts are present in the environment.





Scan for detailed
Bahco Catalogue.



H



I



J



K

L



M

H. Tools at Height

Tools@height is a proven tool retention system for tools when working at height.

• **Range includes:** Webbing Lanyards, Coiled & Retractable Lanyards, Tool Bags, Pouches, General Tools, Power Tools, Air Tools etc.

I. Torque Tools:

Snap-on offers the largest selection of professional-grade torque wrenches. TechWrench® & TechAngle® electronic torque wrenches give you the easy-to-use push button precision in your hand

• **Range includes:** Digital, Click Type & Analog, Battery & Pneumatic Torque Tools.

J. Battery Operated Tools

Snap-on cordless tools combine heavy duty components with lightweight bodies for unrestrained power & mobility.

• **Range includes:** Impact Wrenches, Drills/drivers, Led Work Lights, Cordless Grinder, Ratchets & Thermometer etc.

K. Air operated Tools

Snap-on engineers heavy duty muscle into small packages, so you can unleash big power into tight spaces.

• **Range includes:** Impact Wrenches, Hammers, Ratchets, Drills, Grinders, Sanders & Cut-of Tools etc.

L. General Tools

Files, Scrappers, Threading Tools, Stud Extractors etc.

M. Tool Storages & Set Building

Snap-on range includes the widest range of tools storage solutions & accessories to design storages as per your needs.

• **Range includes:** Cabinets, Trolleys, Bags, Roll Cabs, Chests, Roll Carts, Tote Bags etc.

HYDRAULIC MAINTENANCE TOOLS



Scan for detailed
Power Team Catalogue.

A. Hydraulic Jacks

Jack model from 5 Ton to 1600 Ton in various collapsed height & stroke lengths.

B. Hydraulics Pumps

Pumps are available in manual, air, electric, gasoline & battery operated designs.

C. Hydraulic Presses

Capacity 10 Ton to 200 Ton, choice of power options: manual, electric or air operated.

D. Bottle Jacks

Capacity range from 2 Ton to 110 Ton, Also available in low clearance design & side-ways winding designs.

E. Hydraulic Vise

Posi Lock's hands-free hydraulic bench vise provides 5 Ton of clamping force. Operated by a 10,000 psi air operated foot pump this vise allows you to have two free hands for your project.

F. Hydraulic Nut Splitters

Hydraulic nut splitter offers a reliable & effective solution to the removal of seized & corroded nuts. Model available in 15 Ton & 25 Ton capacity suitable for A/F size: 52 mm

G. Hydraulic Spreaders

Works like an hydraulic pry bar. This spreader offers reliability for tasks requiring powerful spreading force, making it an essential component in any industrial toolkit. Model available in 1 & 2 Ton capacity.

H. Hydraulic Torque Tools

Light weight & high strength bolting tools suitable for torque range of 500 nm to 72000 nm. Available in square drive & open hex design.



ROTARY MAINTENANCE & UP-KEEP TOOLS

Scan for detailed
Posi Lock Catalogue.



A. Constant Oil Levellers (Oil Cups)

CLO's are used to maintains constant level of oil in oil lubricated pumps & machines.

B. Grease Feeders

For grease lubricated bearing & components, which require periodic lubrications. Grease feeders dispense grease as per demand, flow can be adjusted & are refillable.

C. Alignment Kit

Shaft alignment kit is suitable for aligning rotary components for enhancing life of coupling, bearing, pumps & motors.

D. Bearing Fitting Kit

Bearing O.D from 10mm up to 100mm can be easily mounted using our kit, without causing any damage or alignment related issues.

E. Ready Cut Shims

These are ready cut shims with tab, they are made from die-punch process & are burr free / flat.

- **Size available:** 0.05, 0.10, 0.20, 0.50, 1.00, 2.00 mm suitable for bolt dia. M12 to M40, customized sizes are available on required. MOC: SS304.

F. Mechanical Pullers

1 Ton to 40 Ton models available, patented Posi-Lock design provides uniform force & self-centering features. ID hammer pullers also available.

G. Hydraulics Pullers

5 to 200 Ton pullers with multiple attachments & adopters for all kinds of pulling applications.

HYDRAULIC ACCUMULATORS, OIL COOLERS, VALVES, CYLINDERS & PUMPS



Scan for detailed
Other Catalogue.

A. Bladder Type Accumulators

Designed for high pressure hydraulic systems the EHV bladder accumulator is available in carbon & stainless steel. (70 to 690 bar, 0.2 to 57 L).

B. Diaphragm Type Accumulators

Diaphragm accumulators provide an affordable means of storing energy under pressure, absorbing hydraulic shocks, dampening pump pulsations & flow fluctuations. (140 to 350 bar, 0.07 to 4 L).

C. Piston Type Accumulators

The EHP piston accumulators are manufactured in carbon & stainless steel. Available with a wide range of bore sizes. Suitable for industrial, marine, oil, gas & energy applications. (140 to 350 bar, 0.5 to 160 L).

D. Accumulator Accessories

Charging kits, safety blocks, permanent gauge adopter, accumulator clamps & mounting brackets.

E. Hydraulic Air Oil Coolers

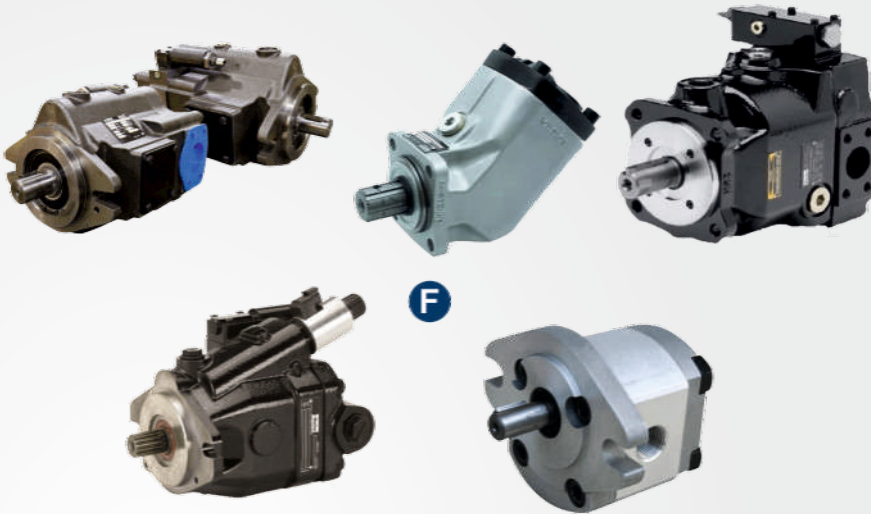
Parker's thermal & power management solutions include a selection of coolers of various cooling capacities such as ac/dc- or hydraulic motor-driven coolers; air oil coolers; air water / glycol & water oil coolers.

• **Range Includes:** AC Motor, DC Motor, Hydraulic Motors, Plate Type Heat Exchangers etc.





Scan for detailed
Parker Hydraulic Catalogue.

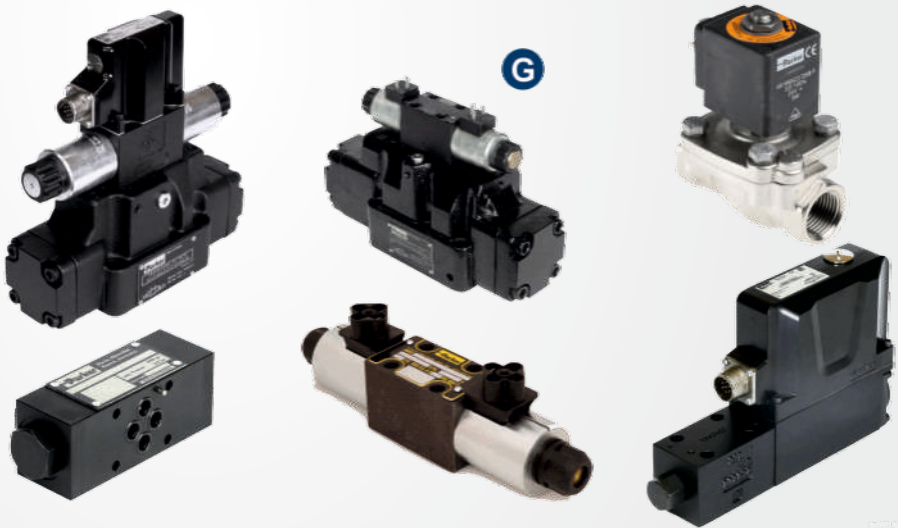


F

F. Hydraulic Pumps

Parker's extensive line of hydraulic pumps deliver ideal performance in the most demanding industrial & mobile applications.

• **Range Includes:** Gear Pumps, Piston & Vane Pumps, Gold Cup Hydrostatic Transmission Pumps, Flow Dividers & Intensifiers.



G

G. Hydraulic Valves

Parker offers manual, motor actuated or solenoid air operated & electrically actuated hydraulic valves; while mounting configurations can be sub-based, in-line or manifold.

• **Range Includes:** Direction Control Valves, Pilot Operated Check Valves, Pressure Reducing Valves, Proportional Valves etc.



H

H. Hydraulic Cylinders

Parker manufactures a diverse range of standard & special tie rod, roundline & 'mill' type cylinders to suit all types of industrial cylinder applications. Our cylinders meet every major industry standard, with other certifications available upon request.

• **Range Includes:** Heavy Duty Hydraulic Cylinders, Tie Rod Style Series 2H/2HVD & Series 3H/3HVD, & Non-tie Rod, Electro-hydraulic Cylinders, All ISO Mountings Available).

• **Bore diameter:** up till 24 inches,

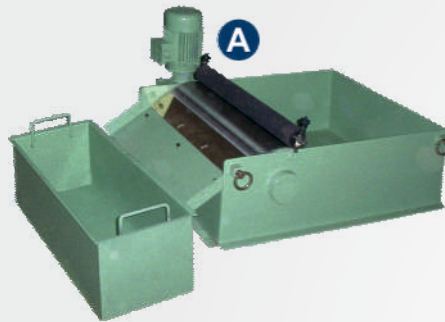
• **Working pressure:** 5000 psi.

FILTRATION SEPARATION & CHIP MANAGEMENT SYSTEMS

A. Magnetic Coolant Filters

Manufactured in 3 different type of drums: Plain, serrated & ring type for effective removal of ferrous contaminations from coolant.

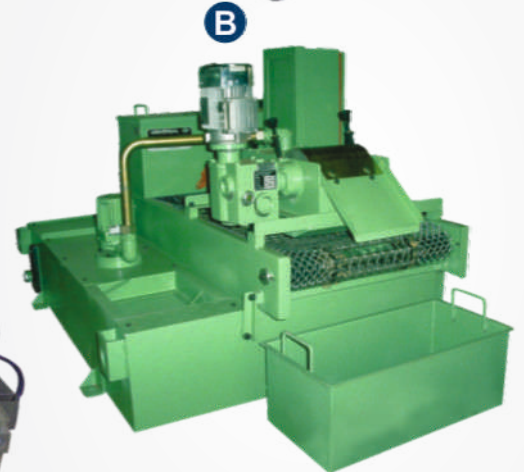
• **Capacity:** 30 LPM - 3000 LPM.



B. Compact Band Filters & Paper Band Filters

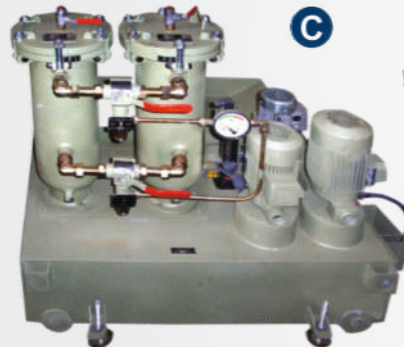
Paper Band Coolant Filters are recommended for filtering coolant on grinding, honing & super finishing applications.

• **Capacity:** 30 LPM - 6000 LPM.



C. Cartridge Bag Filters

Bag filters are manufactured in simplex, duplex & multiplex types. Filtration capabilities of particle sizes 1 micron to 800 micros, their application is in chemical & machine tool industry for filtration of fine sludge.



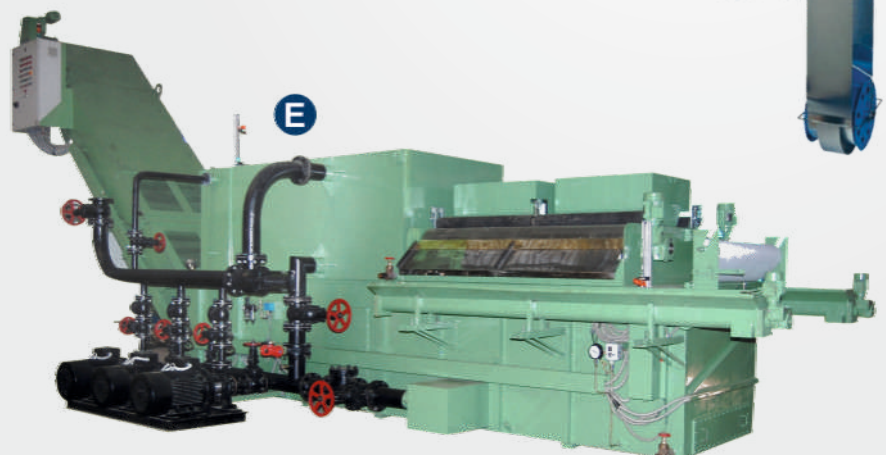
D. Oil Skimmers

Oil skimmers are useful to extract tramp oil, scum, grease etc. floating on the coolant to avoid bacteria growth & proper flow of coolants in filter media. Available up to 1.5 m height & 500 mm width.



E. Vacuum Filters

Suitable for removing sludge contamination from water soluble oils, synthetic coolants, grinding oil & other liquids. Completely automated units available up till 30,000 LPM.





Scan for detailed
Formeco Catalogue.



F. Chip Centrifuge

Chip centrifuge are ideal to separate oil from the chips coming out of the machine on chip conveyor. Lot of oil can be extracted continuously and thereby conserves costly oil. The unit is continuous working and discharge is automatic.

- **Capacity:** 100 kg/hr - 400 kg/hr.

G. Magnetic Chip Conveyors

Magnetic conveyors are very useful for removing chips from hobbing machines, gun drilling machines, broaching machines, presses etc. These are available in various sizes & configuration.

H. Scraper Type Conveyors

Scraper conveyors are most ideal for chips which are fine in nature such as C.I chips, steel, aluminum chips, both in dry & wet applications.

I. Hinged Belt Conveyors

These are most versatile type of conveyors, can handle any type of chips.

J. Rotary Drum filters

These filters are specially designed to handle floating chips like aluminum, brass, Cast Iron etc.

- **Capacity:** 100 LPM - 1000 LPM

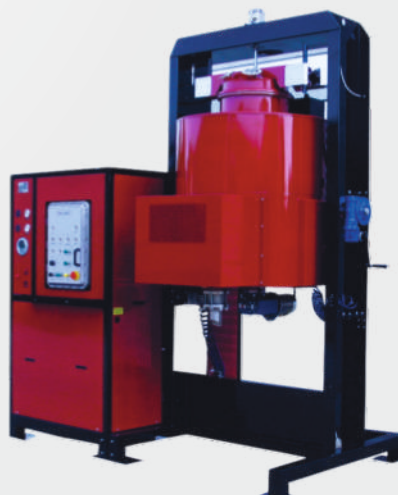
K. Screw / Coil Conveyors

Suitable when very small gaps are available in the machines. Can be used for carrying powdered chips in both wet & dry form.

L. Formeco's Solvent Recycling Systems

Innovative technology for filtration of all kinds of industrial solvents used in degreasing of components, cleaning of equipment's in paint shops etc.

- **Capacity:** 15 L per 5 hr cycle to 2200 L per 5 hr cycle.



PRECISION INSPECTION & METROLOGY EQUIPMENT

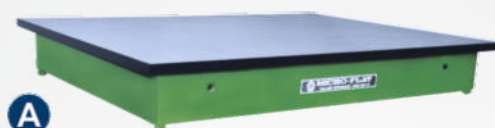


Scan for detailed
Microflat Catalogue.

A. Granite & Cast Iron surface Plates

Surface plates are used for precision gauging, inspection, layout & marking purposes. They are preferred by precision tool rooms, engineering industries & research laboratories.

• **Sizes Available:** up till 6000 x 2000 mm, conforming to IS & DIN standards.



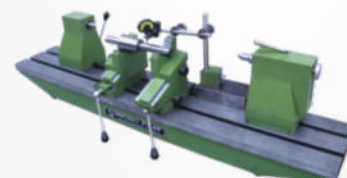
A

B. Bench Centre & PCD Checking Tools

Precision inspection bench center is a testing device of high degree of accuracy which enables quick & precise inspection of jobs, ideally suited in machine shops, tool rooms & standard rooms for checking various parameters like concentricity, face / radial run-out, true running & gear PCD with add on attachments.



B



C. Straight Edges

Straight edges are widely used for setting up, leveling machinery & for checking spot bearing surfaces during hand scrapping operations. Properly supported, they may be used with various indicating devices to check surface flatness of large machined areas like surface tables, machine tables & beds, machine guide ways, etc.

• **Available In:** CI, Granite, Aluminium;
• **Length:** up till 5000 mm.



C



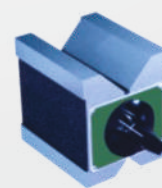
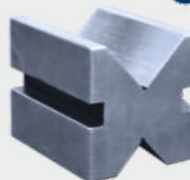
D. V Block

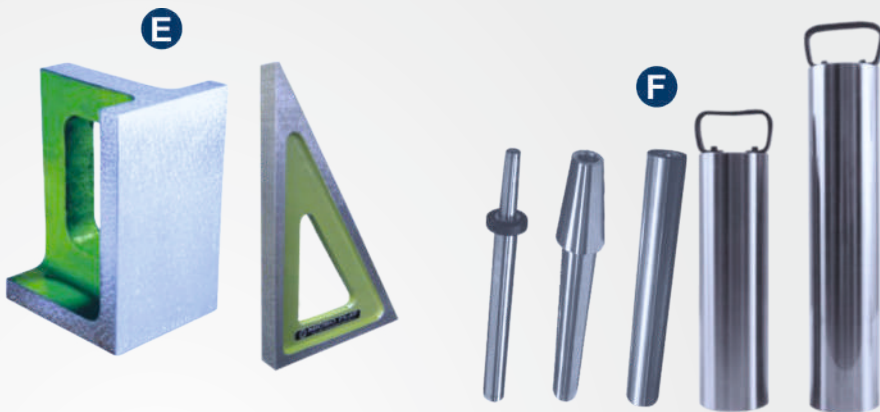
V-blocks are widely used in tooling & inspection purposes such as marking accurate centers, checking concentricity, parallelism, etc.

• **MOC:** Granite, Cast Iron & Also Magnetic Type Available.



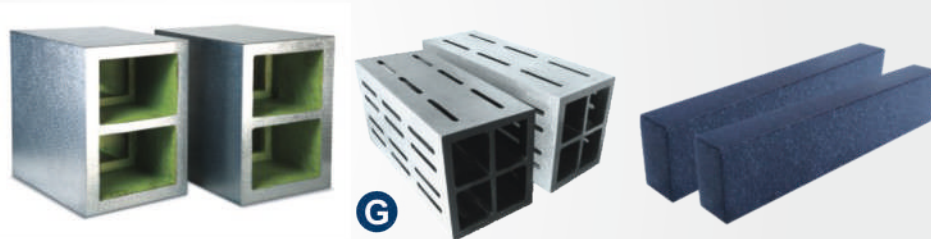
D





E. Cast Iron Squares, Right Angles, Try Square, Granite Squares, Machine Checking Squares

Squares are used for checking squareness of measuring axis in Co-ordinate Measuring Machines (CMM) & geometrical alignment of Machine Tools. Available in multiple configurations.

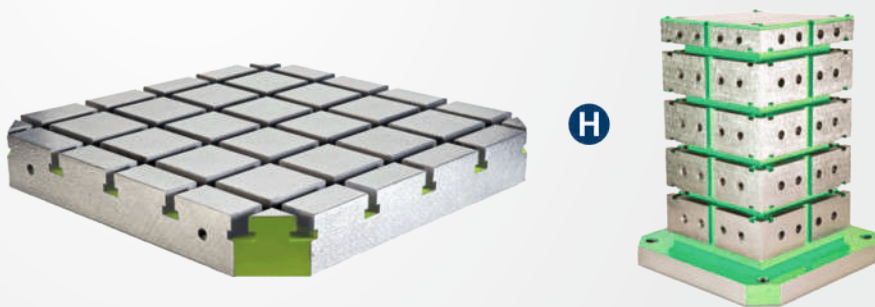


F. Test Mandrels & Cylindrical Masters

Used for checking squareness of vertical axis with reference to horizontal axis & for machine acceptance tests.

G. Parallels: Granite, Cast Iron, C.I. Hollow Box Parallels

Parallels are extensively used in machine shops for set up & machining operations, building up height of work piece on machine tables & for mounting work piece for scribing & inspection.



H. Cast Iron Angle Plates, T-Slotted Plate, Box Angle Plate

They are used for clamping & work holding in various position & as a reference for layout, machining & inspection. They make an ideal fixture for shaping, planning, milling, grinding, horizontal boring & drilling operation.



I. T-Slotted Floor & Bed Plates

T-Slotted Floor Plates are used in engineering industries as rigid bases for layout, marking, inspection, assembly work, large fixtures, special tooling & production set ups, as also for mounting jobs for precision welding or for carrying out machining operation.

MATERIAL HANDLING & STORAGE SOLUTIONS

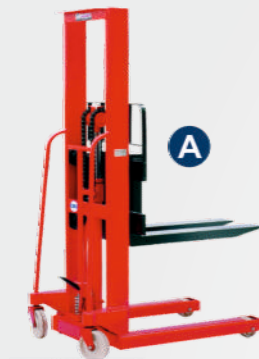


Scan for detailed
NEOTECH Material Handling
Catalogue.

A. Hydraulic Stackers

Available in three Versions - Manual, Electro hydraulic & Battery Operated.

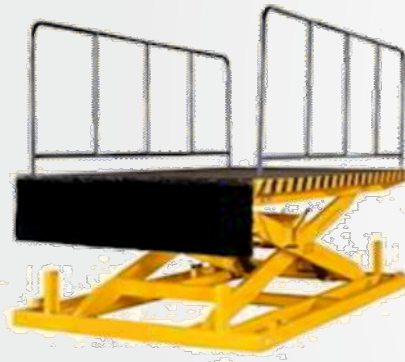
- **Capacity:** 500 kg to 2000 kg.
- **Lifting Height:** 1 m to 3 m.



B. Hydraulic Drum Stackers

Suitable for lifting, stacking & tilting of drums. Suitable for 200 L drum,

- **Height:** up till 3 m.



C. Wall Mounted Stacker

- **Capacity:** 500 kg to 2000 kg.
- **Height:** As per requirement.

D. Hydraulic Lifting Table

Mobile Lifting table, Die loader tables, Scissor Lift Table, Pit Mounted & High raise lifting table for maintenance & goods lifting purpose etc.



E. Hydraulic Floor Crane

G-Type Design, foldable design & counterbalance type.

- **Capacity:** 500 kg to 4,000 kg.





F. Mobile Goods Lift

Suitable for Moving heavy loads,
• **Capacity:** up till 5000 kg.

G. Aerial Work Platform

Manually/ Electrically or battery operated
Material/Man lift. Light weight, highly
mobile & can pass easily through
standard doorways.



H. Drum Handling Equipment

Drum Stacker, Drum Lifter Cum Tilter,
Drum Dolly & Drum Carrier.

I. CNC Tool Holder Trolley & Cupboards

Suitable for safe stationary & mobile
storage of CNC tools for machine shops
– BT-30, BT40, BT50, HSK- 63, HSK-
100. & other non-standard tool holder &
designs available.



J. CNC Chip Handling Trolleys

Tilting design for unloading of chips in
designated areas, can be customized to
match conveyor height also available in
hydraulic tilting design.

SOME OF OUR ESTEEMED CUSTOMERS



NEOTECH EQUIPMENTS PVT. LTD.

MOVING AHEAD WITH NEW TECHNOLOGIES

PRODUCTS | SERVICES | SOLUTIONS

New Delhi Office (Northern Region)

C-106, 2nd Floor, Phase-II, Maya Puri
Industrial Area, New Delhi - 110064
Tel: +91-9315655210, 011-41537923
Mob.: +91 9540062568
Email: mail@neotechworld.com

Vadodara Office (Western Region)

Ananda 10, Ashray, Geri Road, Gotri,
Vadodara – 390021
Tel: +91-9227766425, 9925966422
Mob.: +91 9227766422
Email: info_brd@neotechworld.com

*All Names, Images & logos are copyright of their respective owners.

www.neotechworld.com